

# ALCO APOD Report

June 2024



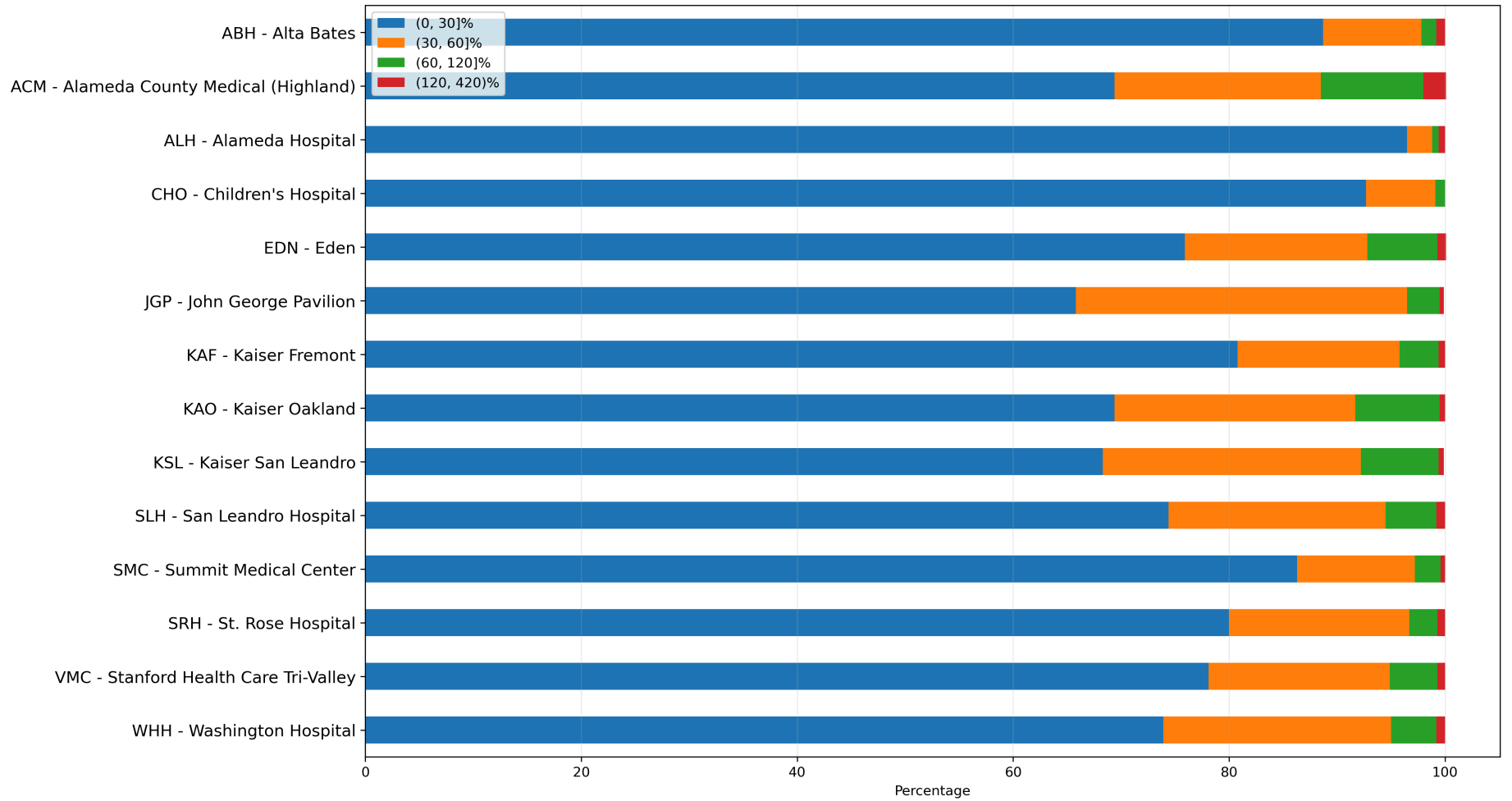
## 1 - Destinations APOD Statistics

	Transports	Average	90th Percentile	APODs > 30 min	APODs > 30 min %
ABH - Alta Bates	496	19.4	32.2	56	11.3%
ACM - Alameda County Medical (Highland)	1,055	29.8	65.1	323	30.6%
ALH - Alameda Hospital	310	13.6	19.1	11	3.5%
CHO - Children's Hospital	109	13.8	23.0	8	7.3%
EDN - Eden	1,037	24.7	53.4	250	24.1%
JGP - John George Pavilion	231	27.1	45.1	79	34.2%
KAF - Kaiser Fremont	527	21.6	41.1	101	19.2%
KAO - Kaiser Oakland	806	27.9	54.8	247	30.6%
KSL - Kaiser San Leandro	774	28.2	55.2	245	31.7%
SLH - San Leandro Hospital	507	25.8	44.4	130	25.6%
SMC - Summit Medical Center	1,232	19.1	36.2	169	13.7%
SRH - St. Rose Hospital	430	21.8	39.4	86	20.0%
VMC - Stanford Health Care Tri-Valley	730	22.5	46.0	160	21.9%
WHH - Washington Hospital	905	25.3	45.8	236	26.1%

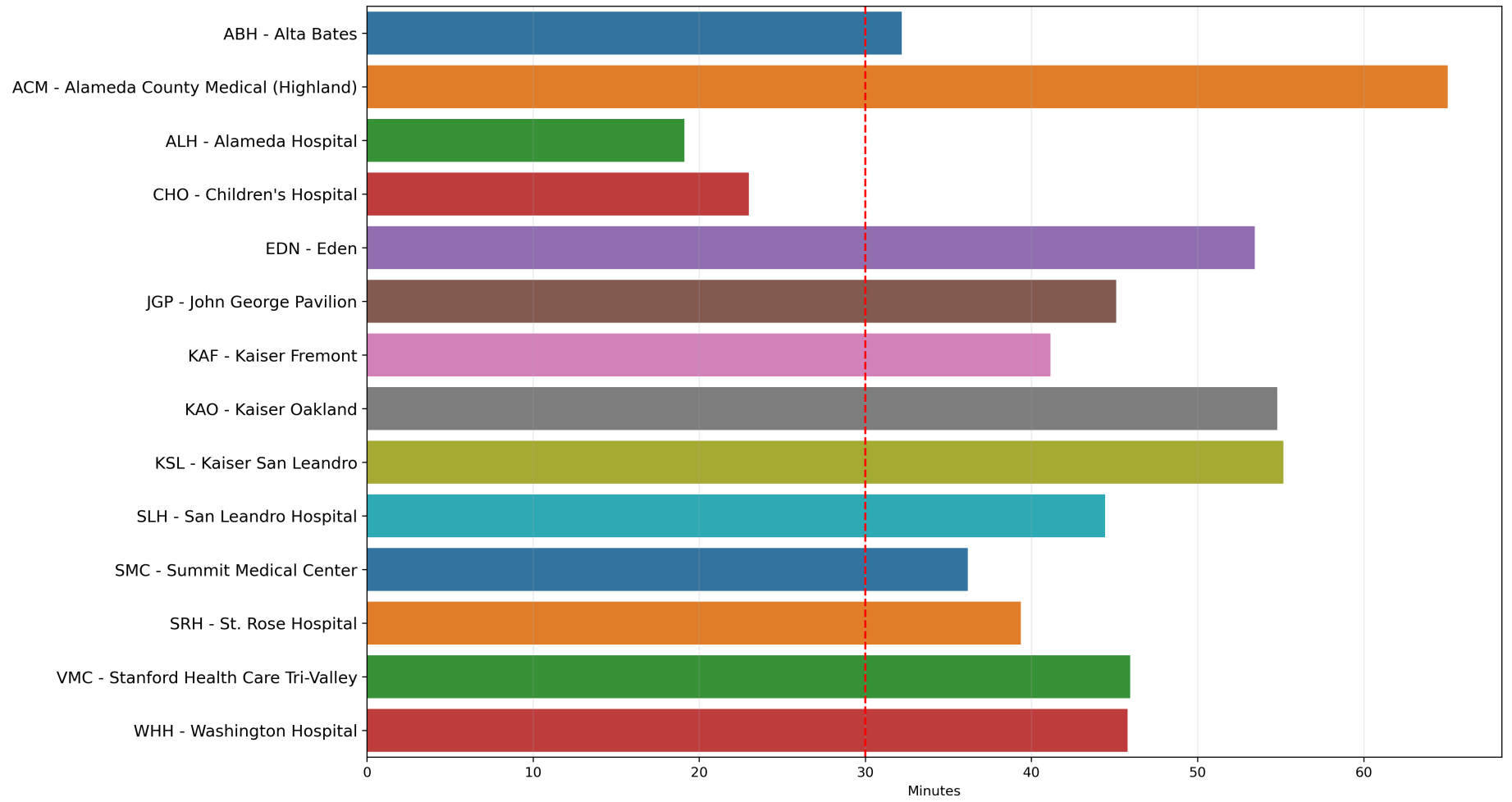
## 2 - Destinations APOD Bins

	Transports	(0, 30]	(0, 30]%	(30, 60]	(30, 60]%	(60, 120]	(60, 120]%	(120, 420)	(120, 420)%
<b>ABH - Alta Bates</b>	496	440	88.7%	45	9.1%	7	1.4%	4	0.8%
<b>ACM - Alameda County Medical (Highland)</b>	1,055	732	69.4%	201	19.1%	100	9.5%	22	2.1%
<b>ALH - Alameda Hospital</b>	310	299	96.5%	7	2.3%	2	0.6%	2	0.6%
<b>CHO - Children's Hospital</b>	109	101	92.7%	7	6.4%	1	0.9%	0	0.0%
<b>EDN - Eden</b>	1,037	787	75.9%	175	16.9%	67	6.5%	8	0.8%
<b>JGP - John George Pavilion</b>	231	152	65.8%	71	30.7%	7	3.0%	1	0.4%
<b>KAF - Kaiser Fremont</b>	527	426	80.8%	79	15.0%	19	3.6%	3	0.6%
<b>KAO - Kaiser Oakland</b>	806	559	69.4%	180	22.3%	63	7.8%	4	0.5%
<b>KSL - Kaiser San Leandro</b>	774	529	68.3%	185	23.9%	56	7.2%	4	0.5%
<b>SLH - San Leandro Hospital</b>	507	377	74.4%	102	20.1%	24	4.7%	4	0.8%
<b>SMC - Summit Medical Center</b>	1,232	1,063	86.3%	134	10.9%	30	2.4%	5	0.4%
<b>SRH - St. Rose Hospital</b>	430	344	80.0%	72	16.7%	11	2.6%	3	0.7%
<b>VMC - Stanford Health Care Tri-Valley</b>	730	570	78.1%	123	16.8%	32	4.4%	5	0.7%
<b>WHH - Washington Hospital</b>	905	669	73.9%	191	21.1%	38	4.2%	7	0.8%

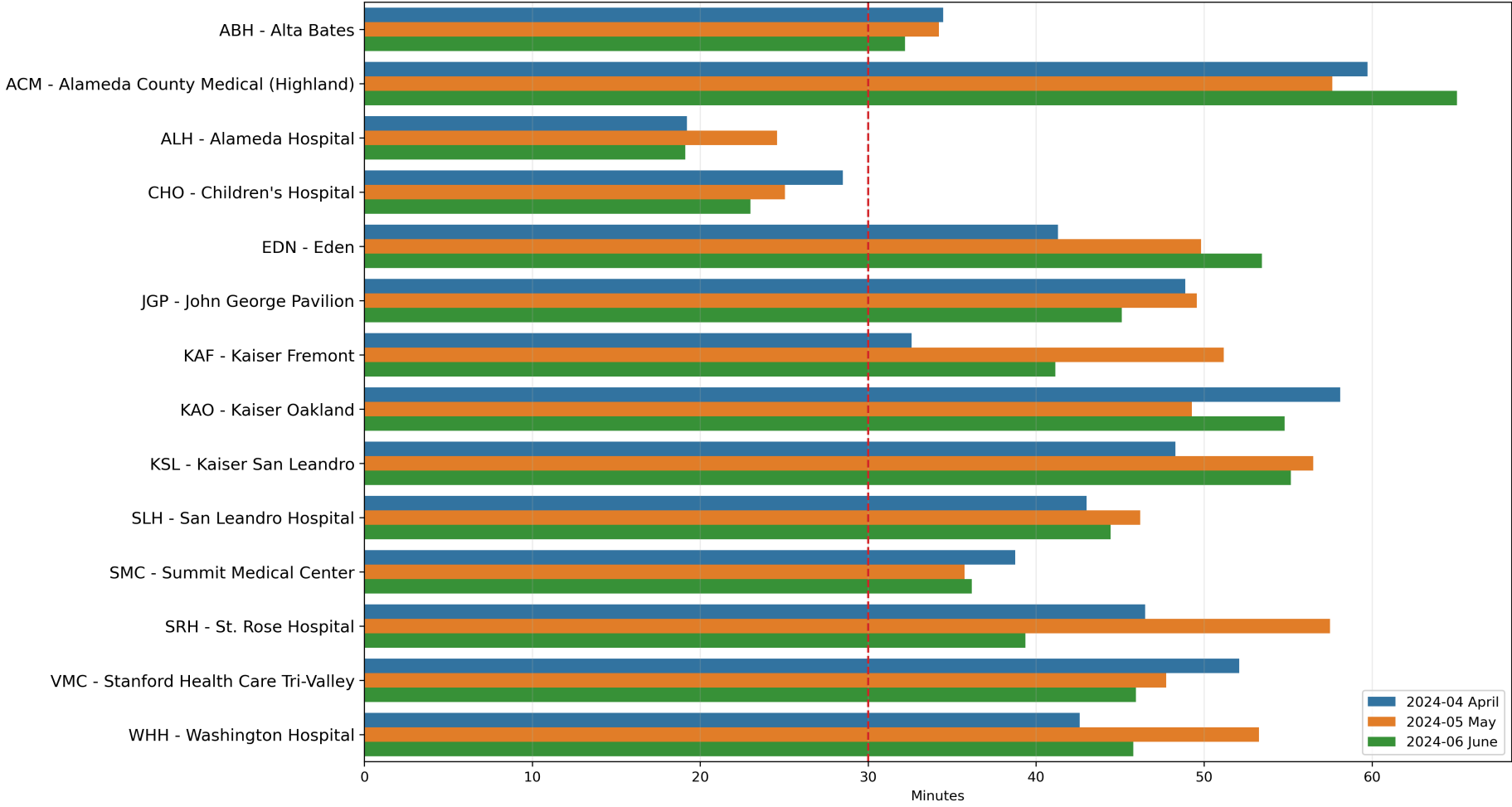
### 3 - Destinations APOD Stacked Bins



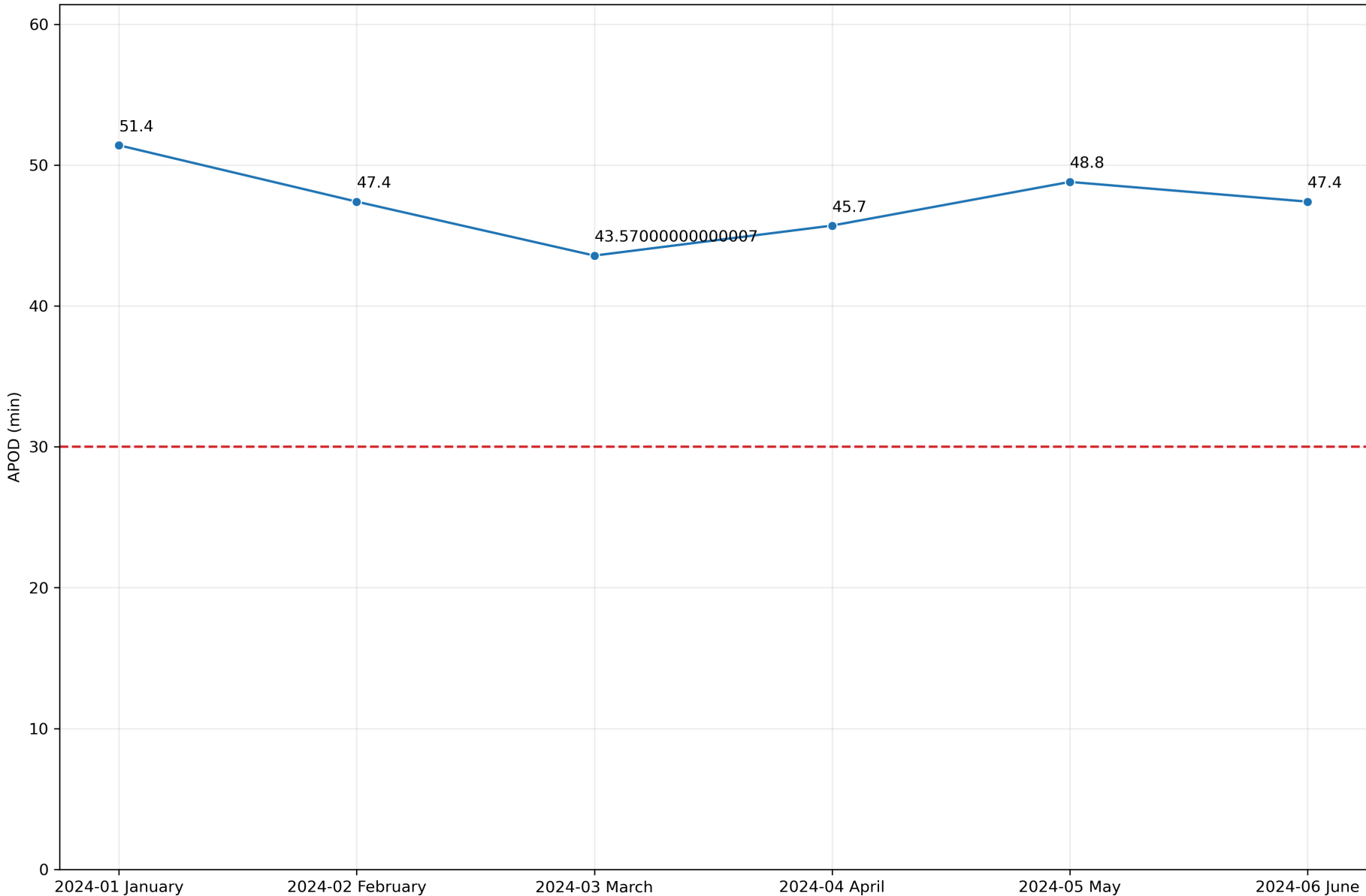
## 4 - June 2024 APOD by Destination 90<sup>th</sup> Percentile



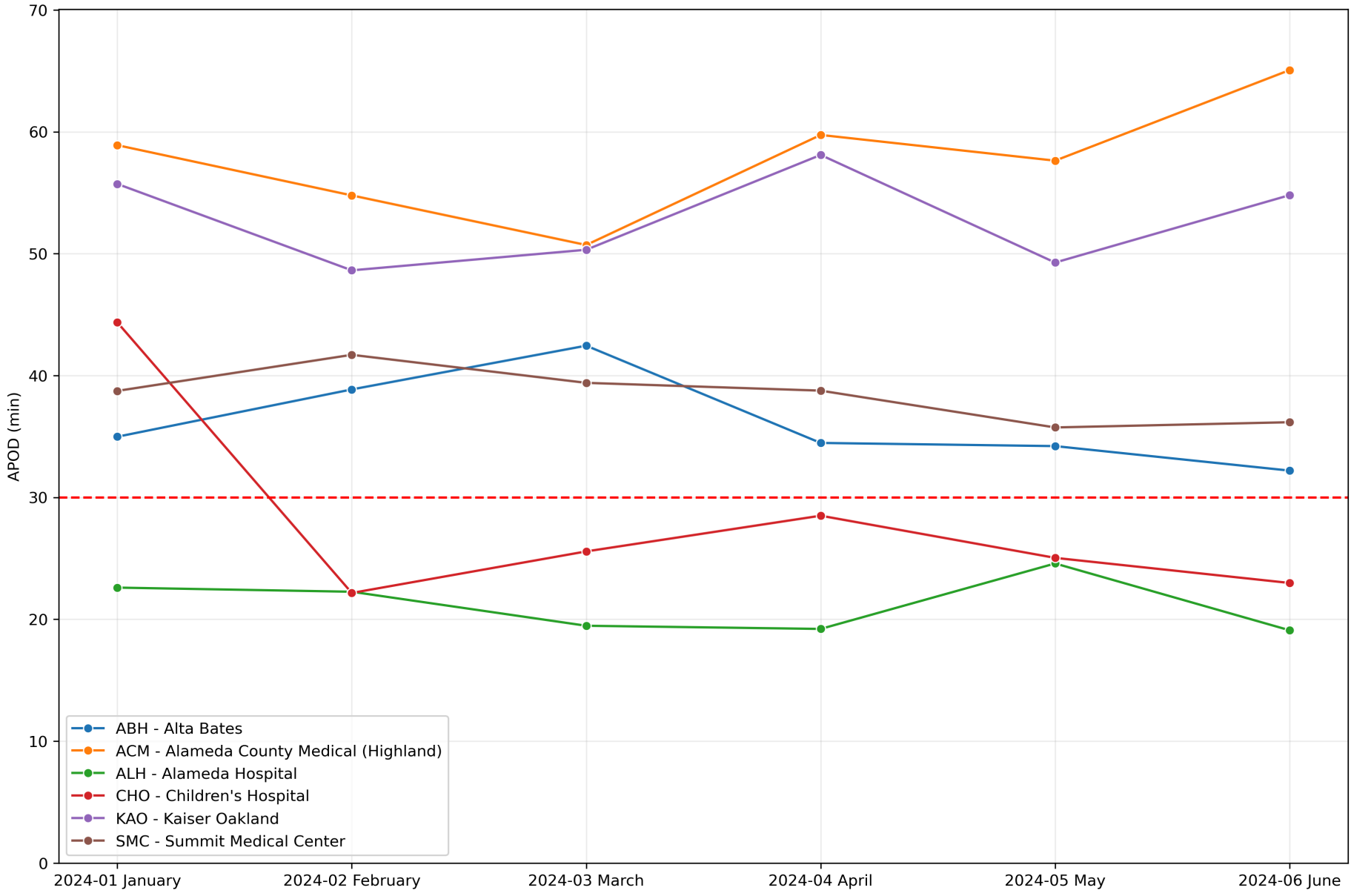
# 5 - APODs by Destination 90<sup>th</sup> Percentile



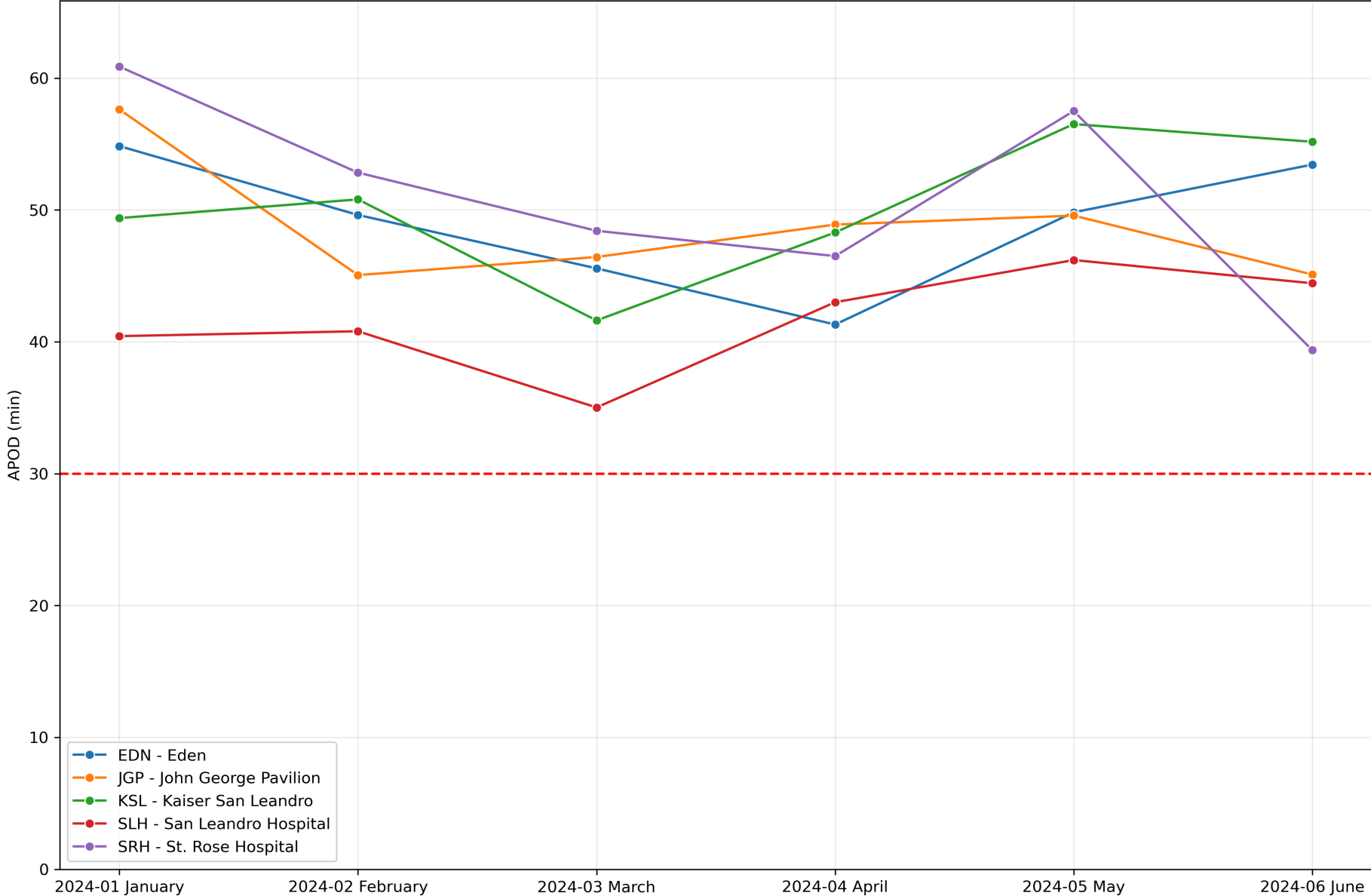
# 6 - Countywide APOD 90<sup>th</sup> Percentile



# 7 - Northern APODs 90<sup>th</sup> Percentile



# 8 - Middle APODs 90<sup>th</sup> Percentile





# 9 - Southern APODs 90<sup>th</sup> Percentile

